

## *Dyspessa aphrodite* sp. n. from Greece (Cossidae)

ROMAN V. YAKOVLEV<sup>1</sup> & THOMAS J. WITT<sup>2</sup>

<sup>1</sup> ul. Chkalova, 57–81, Barnaul, 656049, Russia; e-mail: yakovlev\_r@mail.ru

<sup>2</sup> Tengstr.33, 80796 München, Germany; e-mail: thomas@witt-thomas.com

**Abstract.** *Dyspessa aphrodite* Yakovlev & Witt, sp. n. is described from Greece and compared with *Dyspessa emilia* (Staudinger, 1878), with which it has been confused. Therefore, *D. emilia* must be removed from the European list of Cossidae.

### Introduction

Our knowledge of European Cossidae is considered satisfactory. After the revisions of Daniel (1955–1965) several comprehensive papers and books have been published with new data on the distribution and systematics of the European carpenter moths (de Freina & Witt 1990; Karsholt & Razowski 1996; Yakovlev 2005). However, while examining material in the Thomas Witt entomological museum (MWM) the authors surprisingly found a series of an intriguing carpenter moth of the genus *Dyspessa* Hübner, 1820 originating from Greece (Peloponnes, Mega Spileon). These moths had been wrongly identified as *Dyspessa emilia* (Staudinger, 1878) and were mentioned as such for the first time for the fauna of Greece by de Freina & Witt (1990: 31–32, pl. 4 figs 10–12), and later by Karsholt & Razowski (1996). A detailed examination of these specimens revealed that they represent a species new to science and its description is given below. As a result, *Dyspessa emilia* (Staudinger, 1878) has to be deleted from the list of European Cossidae and must be replaced by *Dyspessa aphrodite* Yakovlev & Witt, sp. n.

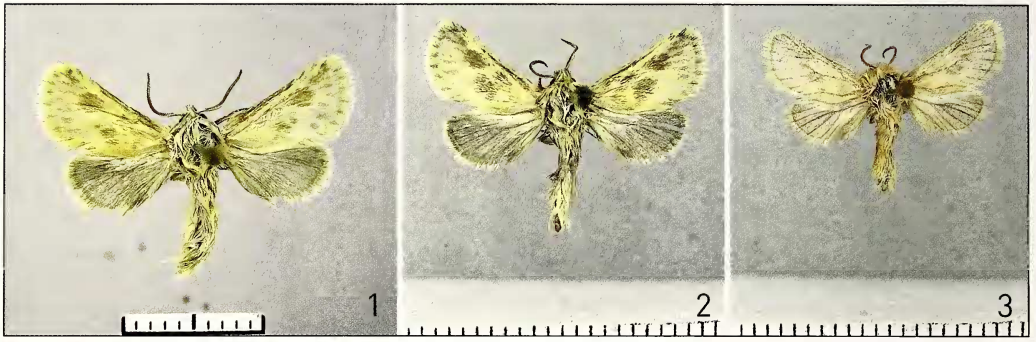
### *Dyspessa aphrodite* sp. n.

Figs 1–3, 7, 9

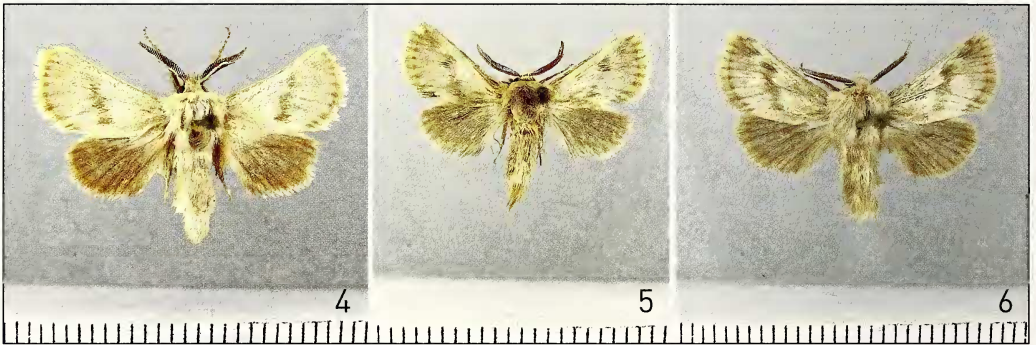
**Material.** Holotype-♂: “Greece | Peloponnes | Mega Spileon | 6.vi.1981 | Mühle leg.”, “Holotypus | *Dyspessa aphrodite* | Yakovlev & Witt”, MWM. – Paratypes: 7♂, same data (GenPr.11821, 11822) MWM. Add separators between lines of labels and add Holotype label and others if applicable.

**Description.** Forewing length 9–10 mm. Antenna bipectinate, medially with processes becoming 1.5 times longer than segment diameter, space between processes as wide as processus breadth. Forewing pale yellow with small dark spot in discal zone in area of cubital veins, relatively large brown spot in postdiscal zone in radial area (at discal cell apex), and weakly expressed brown spot at apex. Two paratypes miss these spots. Fringe mostly yellow, but basally dark at tips of radial veins. Hindwing greyish yellow with pale yellow fringe.

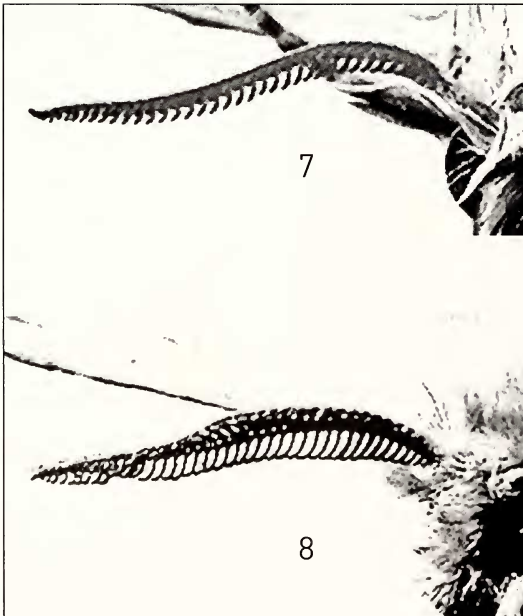
**Male genitalia** (Fig. 9). Uncus triangular with a beak-like pointed apex. Gnathos arms thin and long, gnathos small. Valva trapezoid with almost rectangular distal margin, also with small crest on costal margin; distal end membranous. Arms of transtilla forming wide triangles. Saccus small, rounded. Juxta small. Phallus curved, thin and tapering to apex; vesica opening occupying half of its length.



Figs 1–3. *Dyspessa aphrodite* Yakovlev & Witt, sp. n. (MWM). 1. Holotype. 2–3. Paratypes.

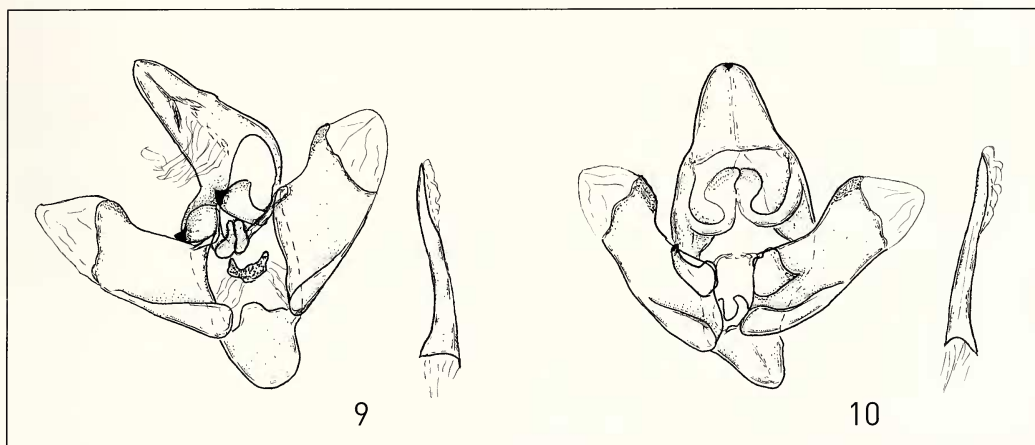


Figs 4–6. *Dyspessa emilia* (Staudinger, 1878), males from Turkey, (MWM). 4. Anatolia, 25 km south of Sivas, 1500 m, 24–26.vii.1978, leg. W. Thomas. 5–6. Ak.-Ch.-Tschiftlik, 19–20.vii.1928, coll. v. Bartha.



**Diagnosis.** The new species is close to *Dyspessa emilia* (Staudinger, 1878) (Figs 4–6, 8, 10) from which it differs by the following characters: The antennal processus in *D. emilia* is much longer; it is 2.5–3 times longer than the antennal diameter while in *D. aphrodite* it is not longer than 1.5 times this diameter. The forewing is much wider than in *D. emilia*. The basal parts of the forewing fringe are dark only at the distal end of the radial veins in *D. aphrodite*, whereas it is dark at the distal end of all veins in

Figs 7–8. Antennae of male *Dyspessa* specimens. 7. *D. aphrodite* Yakovlev & Witt, sp. n., paratype. 8. *D. emilia* (Staudinger, 1878).



**Fig. 9–10.** Male genitalia *Dyspessa aphrodite*. **9.** *Dyspessa aphrodite* Yakovlev & Witt, sp. n. **10.** *Dyspessa emilia* (Staudinger, 1878).

*D. emilia*. In forewing pattern, the spots of the postdiscal row are approximately equal in size in *D. emilia*. In the new species the spot in the radial area is larger than the others, which are shifted into the discal zone. The male genitalia practically do not differ, except for the somewhat more expressed processus on the costal margin of the valva in *Dyspessa emilia*. However, our analysis of very large material in genus *Dyspessa* showed very weak interspecific differences in genitalia structure.

**Etymology.** In Greek mythology Aphrodite is the goddess of love and beauty.

**Distribution.** Known only from the type locality.

**Remark.** The absence of forewing dark spots on two paratypes may be due to wear or individual variation.

## References

- Daniel, F. 1955. Monographie der Cossidae I. Kritische Beurteilung der bisher dem Genus *Stygia* Latr. zugeleiteten Arten. – Mitteilungen der Münchener Entomologischen Gesellschaft **44–45** (1954–1955): 159–181, pl. 1.
- Daniel, F. 1956. Monographie der palaearktischen Cossidae II. Die Genera *Cossus* Fabr. und *Lamello-cossus* gen. n. (Lep.). – Mitteilungen der Münchener Entomologischen Gesellschaft **46**: 243–289, pls 8–10.
- Daniel, F. 1959. Monographie der palaearktischen Cossidae III. Das Genus *Holcocerus* Stgr. – Mitteilungen der Münchener Entomologischen Gesellschaft **49**: 102–160.
- Daniel, F. 1960. Monographie der palaearktischen Cossidae IV. Die Genera *Cossulinus* Kby., *Dyspessa-cossus* Dan. und *Isoceras* Tti. (Lep.). – Mitteilungen der Münchener Entomologischen Gesellschaft **50**: 93–118.
- Daniel, F. 1961. Monographie der palaearktischen Cossidae V. Die Genera *Parahypopta* g.n., *Sinicossus* Clench und *Catopta* Stgr. – Mitteilungen der Münchener Entomologischen Gesellschaft **51**: 160–212, pls 16–17.
- Daniel, F. 1962. Monographie der palaearktischen Cossidae VI. Genus *Dyspessa* Hbn. Erster Teil. – Mitteilungen der Münchener Entomologischen Gesellschaft **52**: 1–38.
- Daniel, F. 1964. Monographie der palaearktischen Cossidae VII. Genus *Dyspessa* Hbn. Zweiter Teil. Genus *Paropta* Stgr. – Mitteilungen der Münchener Entomologischen Gesellschaft **54**: 181–236.

- Daniel, F. 1965. Monographie der palaearktischen Cossidae VIII. Nachträge und Register zur Subfamilie Cossinae. – Mitteilungen der Münchner Entomologischen Gesellschaft **56**: 77–114, pls 2–3.
- Freina, J. J. de & T. J. Witt, 1990. Die Bombyces und Sphinges der Westpalaearktis (Insecta, Lepidoptera). Band 2. Cossoidea, Hepialoidea, Pyraloidea, Zygaenoidea. – Edition Forschung & Wissenschaft Verlag GmbH, München. 134 pp., 10 pls.
- Karsholt, O. & J. Razowski (eds.) 1996. The Lepidoptera of Europe. A distributional checklist. – Apollo Books, Stenstrup, 380 pp.
- Yakovlev, R.V. 2005. New data of distribution and systematic of Cossidae (Lepidoptera) of Europe and adjacent territories. – Eversmannia 3/4: 18–27. (in Russian)